

How to update the firmware

Please download and extract the file „PreBoxS2Digital-Firmware-V2-12.zip“ from the website.

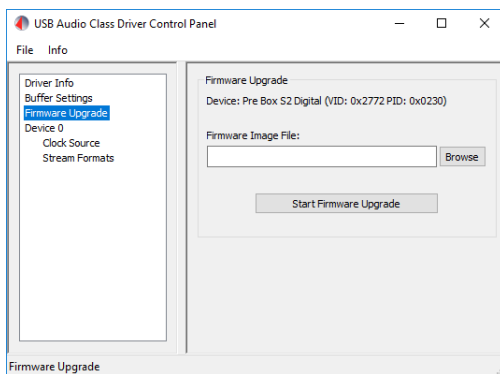
Downloads:

[Firmware Version 2.12](#)
[Firmware Upgrade Utility](#)

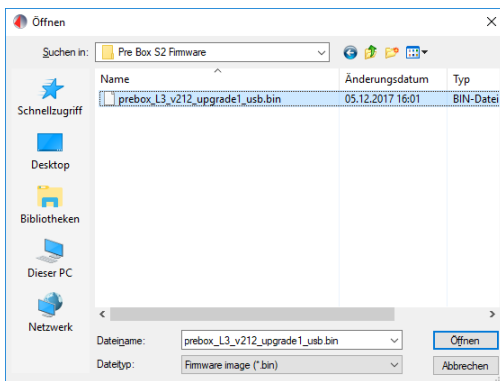
[How to update the firmware](#)

FAQ - Hints for using Pre Box S2 Digital

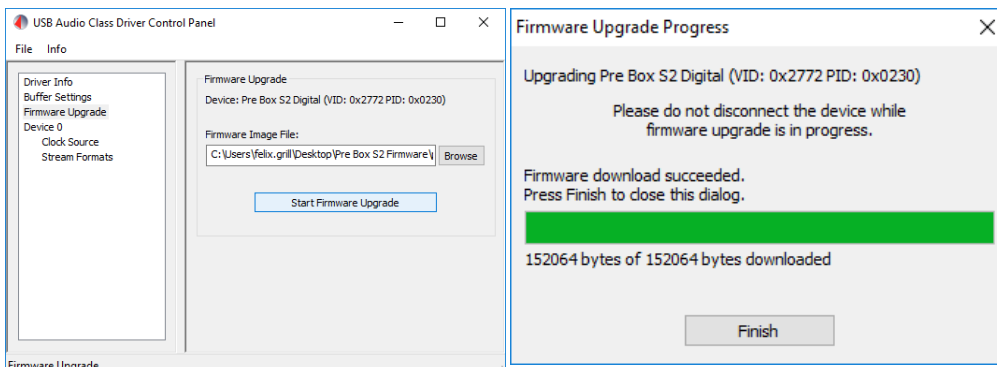
Connect the Pre Box S2 Digital to a Windows computer and open the driver control panel - click on „Firmware Upgrade“.



Click on „Browse“ and navigate to the firmware file and click on „open“.



Now press the button „Start Firmware Upgrade“. The process will take approximately two minutes, please do not disconnect the Pre Box S2 Digital from your computer until the upgrade has been finished. Lastly click on „Finish“.



You can verify the new firmware version on the Pre Box S2 Digital by pressing the Menu button on the front panel and then pressing the upward arrow twice.

The display will show „SW version - 2.12“ if the process was successful!

How to update the firmware with Windows driver „UNI_Project_Driver v4.38.0“ and higher

Please download and extract the files „PreBoxS2Digital-Firmware-V2-12.zip“ and „Pro-Ject Firmware Update Utility.zip“ from the website

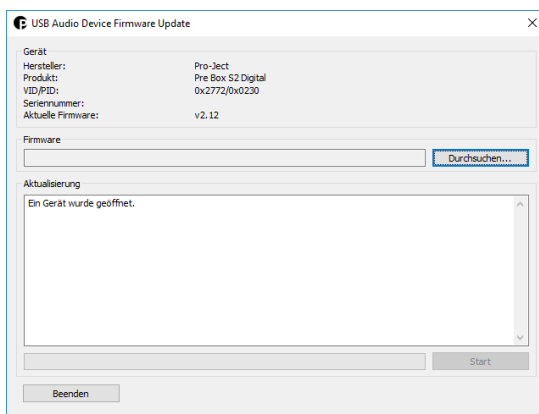
Downloads:

[Firmware Version 2.12](#)
[Firmware Upgrade Utility](#)

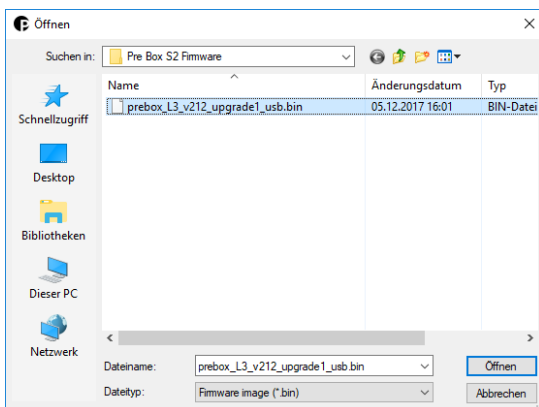
[How to update the firmware](#)

[FAQ - Hints for using Pre Box S2 Digital](#)

Open the file „ds2wDfu.exe“ from „Pro-Ject Firmware Update Utility.zip“

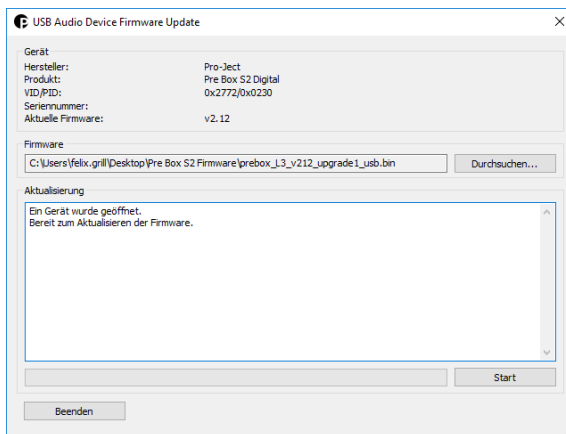


Click on „Browse“ and navigate to the .bin firmware file from „PreBoxS2Digital-Firmware-V2-12.zip“ and click on „Open“

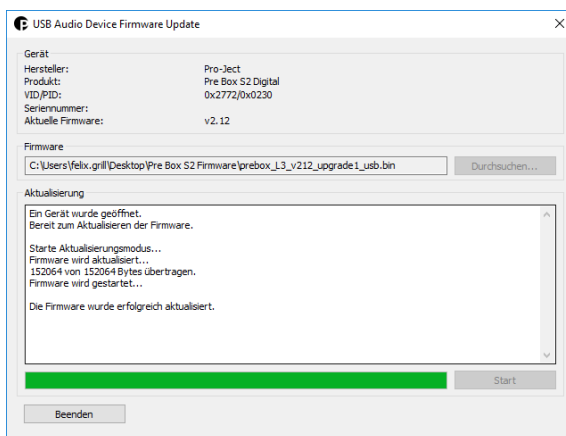


How to update the firmware with Windows driver „UNI_Project_Driver v4.38.0“ and higher

Now press „Start“ and wait for the program to finish the firmware upgrade. This process can take a few minutes.



Once done, the program will tell you that the firmware has been successfully updated. Now press „Finish“



The firmware has now been updated!